

# EBS250

系列漏电断路器

Series Earth Leakage Circuit Breaker



# EBS250 Series Earth Leakage Circuit Breaker

系列漏电断路器

## Outline

### 概述

EBS250系列漏电断路器是面向21世纪的高新技术产品。该产品设计先进，性能指标高；外形美观；体积小，安装方便。

符合IEC60947-2，GB/T14048.2《低压开关设备和控制设备 低压断路器》及其附录B《具有剩余电流保护的断路器》：IEC755、GB/T6829《剩余电流动作保护器的一般要求》。

## Product Features

### 产品特色

- 1、尺寸标准化（与ABS203、ABS204的外形尺寸及安装尺寸相同），方便用户互换
- 2、附件通用化（与ABS203、ABS204的附件通用），方便采购及管理
- 3、附件安装便捷，不需要打开断路器整体，仅打开面盖即可安装，避免了安装时有异物掉入产品内部造成的安全风险
- 4、剩余电流及剩余电流运作时间多档可调，方便用户按实际需要选用

## Usage & Appliance

### 用途及使用范围

该断路器适用于交流50Hz，额定电压至415V，额定电流至250A的电力系统中，用来分配电能和保护电力系统免受过载、短路、泄露等故障的危害，也可用来控制电动机不频繁的操作。该断路器的漏电(剩余电流)保护功能是对有致命危险的人身触电提供间接接触保护，还可以防止由于过电流保护装置不能检测出的而长期存在的接地故障电流引起的电气火灾。

该断路器的剩余电流的额定值可调节，漏电保护动作时间也可调节。因此可以配电系统中实现漏电时的选择性保护。

The EBS250 series residual current circuit breaker is a high-tech product designed for the 21st century. The product has advanced design and high performance index; Beautiful appearance; Small size, easy to install.

Comply with IEC60947-2, GB/T 14048.2 "Low-voltage circuit breakers for low-voltage switchgear and control equipment" and its appendix B "circuit breakers with residual current protection IEC755, GB/T6829 "General requirements for residual current operating protectors"

1. Standardization of dimensions (identical to the external dimensions and installation dimensions of ABS203 and ABS204) for easy interchangeability by users.
2. Universal attachment (compatible with ABS203 and ABS204 attachments) for easy procurement and management.
3. The attachment installation is convenient and does not require opening the circuit breaker as a whole. It can be installed by simply opening the cover, avoiding safety risks caused by foreign objects falling into the product during installation
4. The residual current and residual current operation time are adjustable in multiple levels, making it convenient for users to choose according to their actual needs.

This circuit breaker is suitable for use in power systems with AC 50Hz, rated voltage up to 415V, and rated current up to 250A, for distributing electrical energy and protecting the power system.

It is free from the hazards of overload, short circuit, leakage and other faults, and can also be used to control the infrequent operation of the motor. The residual current protection function of this circuit breaker is to provide indirect contact protection against fatal electric shock and prevent electrical fires caused by long-term grounding fault currents that cannot be detected by overcurrent protection devices.

The rated value of the residual current of the circuit breaker can be adjusted, and the action time of the leakage protection can also be adjusted. Therefore, selective protection against leakage can be achieved in the power distribution system.

## Normal operation condition

### 正常工作条件

断路器适用于下列工作环境:

- 1、周围空气温度-5℃~+40℃
- 2、海拔温度不超过2000m
- 3、空气相对湿度在最高温度为+40℃时不超过50%，在较低温度下可允许有较高相对湿度、最湿月的月平均最低温度不超过+25℃该月平均最大相对湿度不超过90%
- 4、污染等级:3级周围空气中无爆炸危险、且无腐蚀金属和破坏绝缘的气体 and 导电尘埃
- 5、安装类别为 III
- 6、断路器的“Line”端子接电源，“Load”端子接负载，不可反接

Suitable for the following working environments:

1. Surrounding air temperature -5℃~+40℃
2. Altitude temperature not exceeding 2000m.
3. The relative humidity of the air shall not exceed 50% at a maximum temperature of +40℃, and higher relative humidity may be allowed at lower temperatures. The average minimum temperature of the wettest month shall not exceed +25℃, and the average maximum relative humidity of that month shall not exceed 90%.
4. Pollution level: Level 3. There is no explosion hazard in the surrounding air, and there are no corrosive metals, insulation damaging gases, or conductive dust.
5. Installation category is III
6. The "Line" terminal of the circuit breaker is connected to the power supply, and the "Load" terminal is connected to the load, and cannot be reversed.

# EBS250 Series Earth Leakage Circuit Breaker

系列漏电断路器

## Main technical parameter

主要技术性能指标

表(table)1

壳架等级额定电流 Inm(A)		250	
型号 Type		EBS203	EBS204
外形 Photo			
额定电流 Rated current		100A、125A、150A、175A、200A、225A、250A	
极数 Poles		3	4
额定绝缘电压 Rated insulation voltage		AC 690V 50Hz	
额定工作电压 Rated working voltage		AC 415V 50Hz	
飞弧距离 (mm) Arcing distance mm		≤50	
额定极限/运行分断能力 Rated ultimate/service breaking capacity Icu/Ics(kA)		Icu : 25kA Ics = : 50%Icu	
额定剩余动作电流 Rated residual operation current In (mA)		100/200/500mA 可调 Adjustable	
剩余电流动作时间 Remaining current operation time		≤0.1s	
额定剩余不动作电流 Rated residual non-operation current In (mA)		1/2 IΔn	
额定剩余短路接通分断能力 Rated residual short-circuit making & breaking capacity IΔn (kA)		1/4 Icu	
操作性能(次) Operation characteristic(times)	通电 ON	1000	
	不通电 OFF	7000	
外形尺寸 Dimensions (mm)			
	a	105	140
	b	165	165
	c	56	56

结构说明:

4极断路器的N极不装过电流脱扣器, 与其他三级一起合分

Structure description:

The N phase of the 4-pole circuit breaker is not equipped with an overcurrent trip make and is connected and breaker along with other three poles

# EBS250 Series Earth Leakage Circuit Breaker

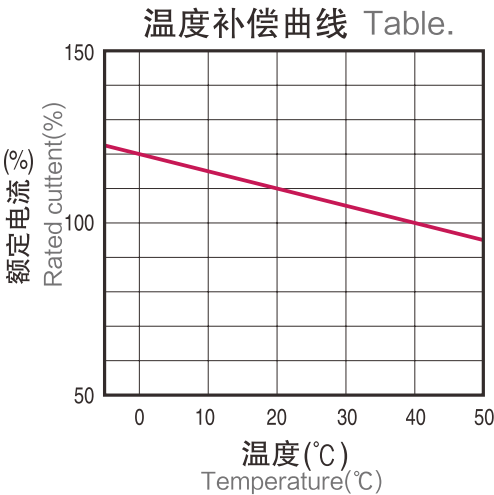
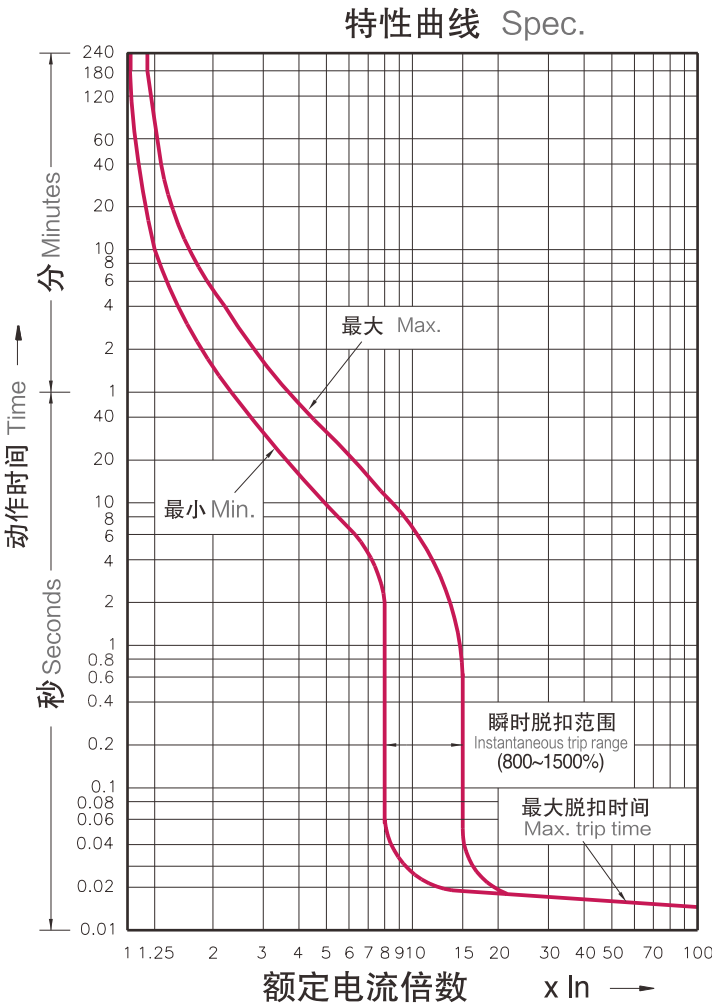
系列漏电断路器

## Overcurrent Protection Characteristic Curve

过电流保护特性曲线

## Temperature compensating curve

热脱扣器温度校正曲线

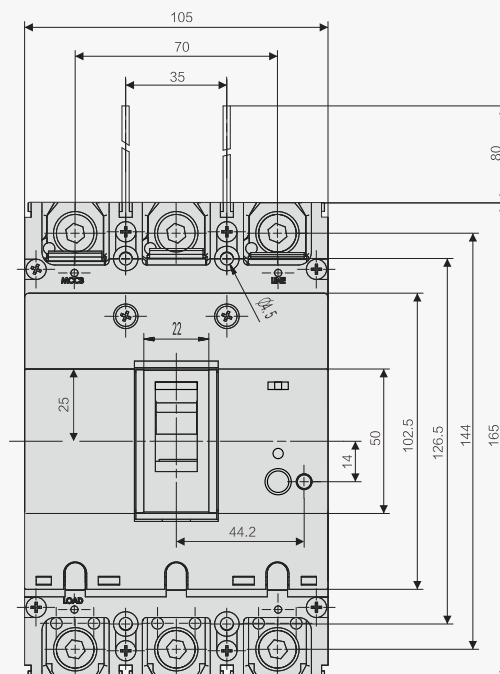
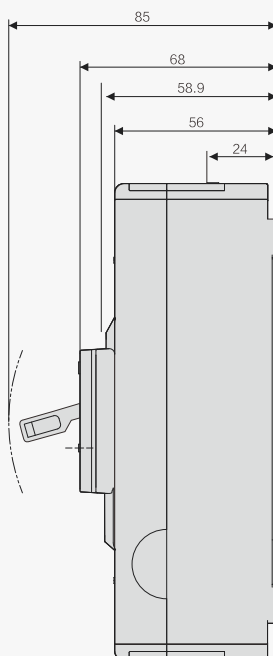


# EBS250 Series Earth Leakage Circuit Breaker

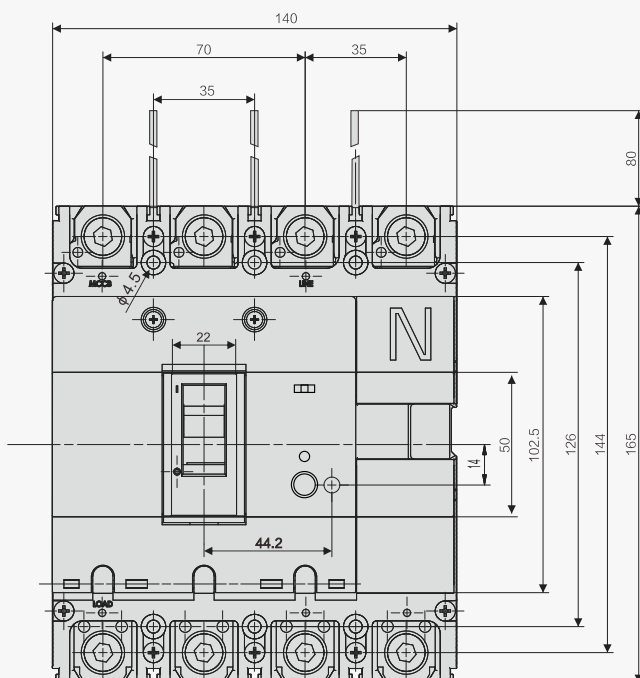
系列漏电断路器

## Outline & Mounting Dimension

外形及安装尺寸



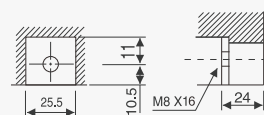
EBS203



EBS204

### 端子尺寸

Terminal Dimension



### 连接导体尺寸

Connecting Conductor Dimension

